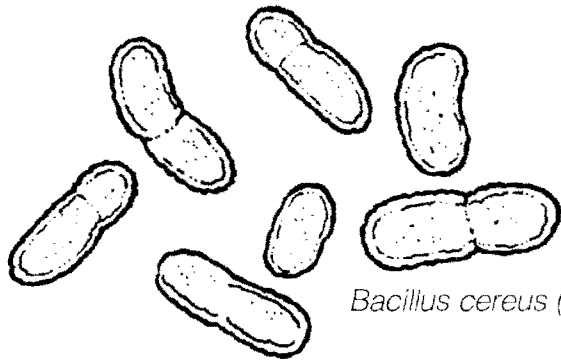
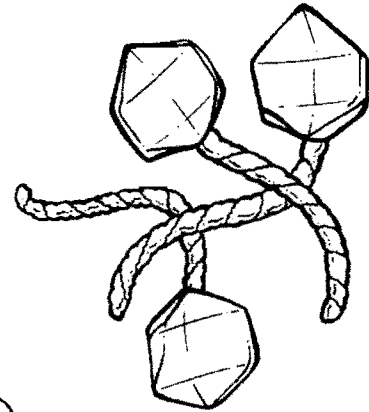


**Blackline Master 1.1**

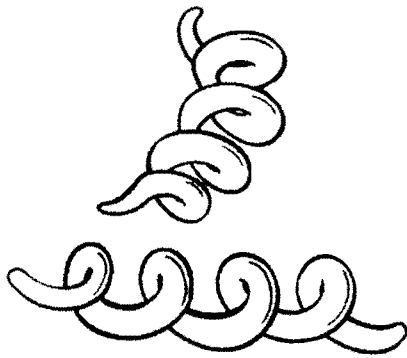
**"What Are Germs?" Coloring Sheet**



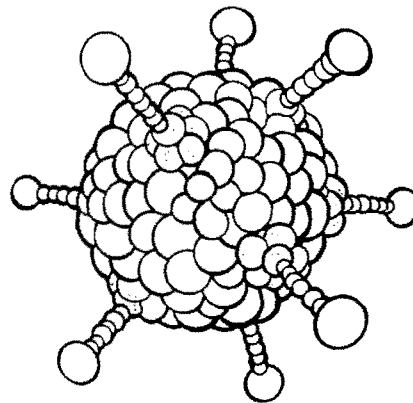
*Bacillus cereus (bacteria)*



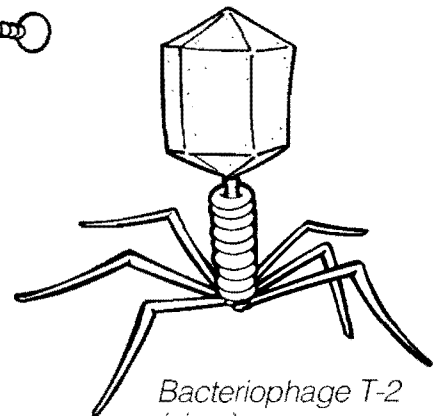
*Bacteriophage lambda (virus)*



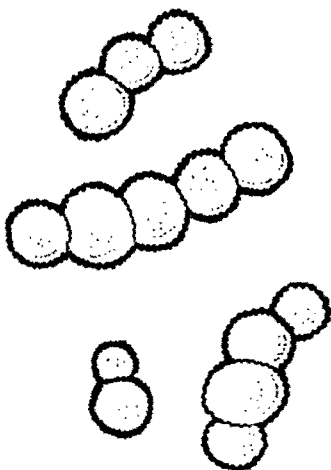
*Spirillum (bacteria)*



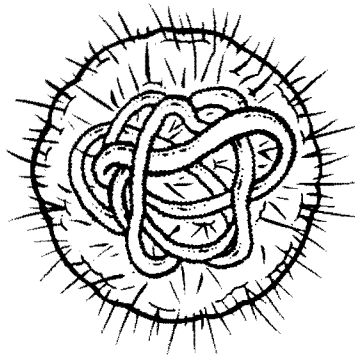
*Rhinovirus*



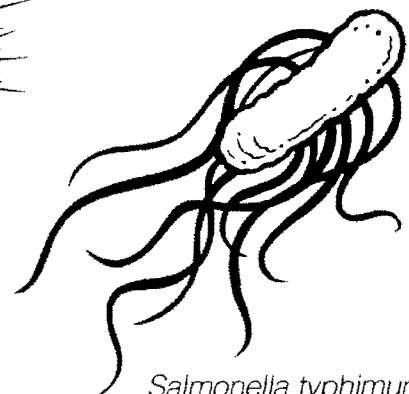
*Bacteriophage T-2 (virus)*



*Streptococcus (bacteria)*

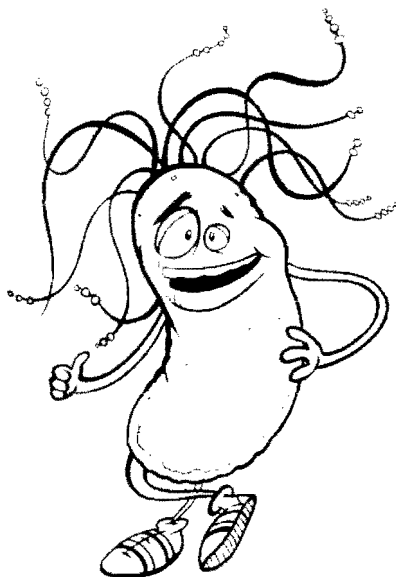
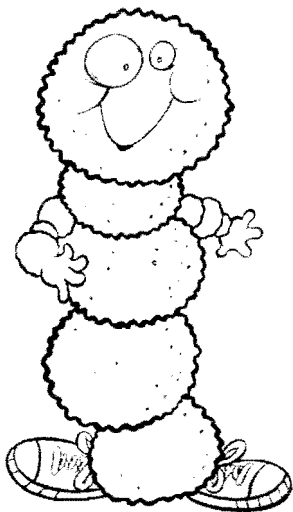
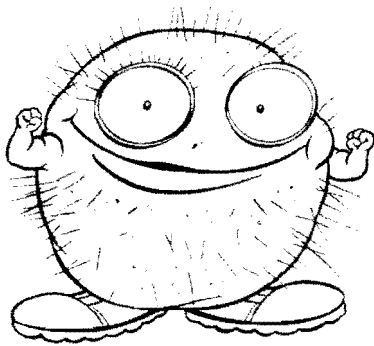
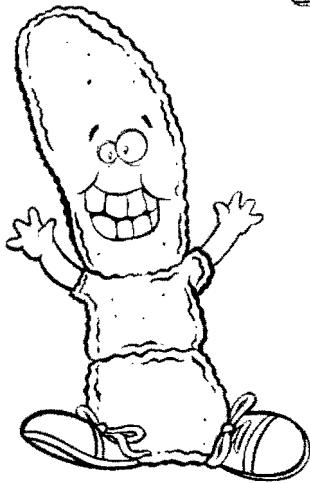
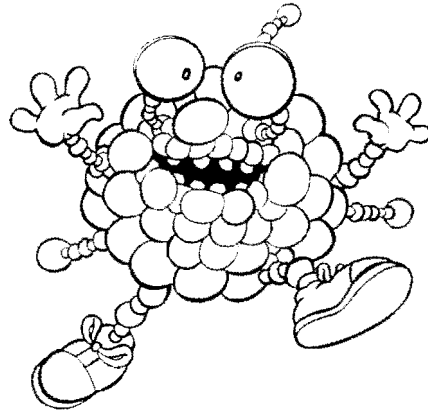
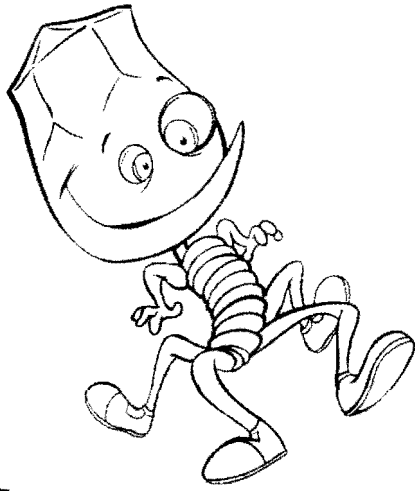


*Rubella virus*

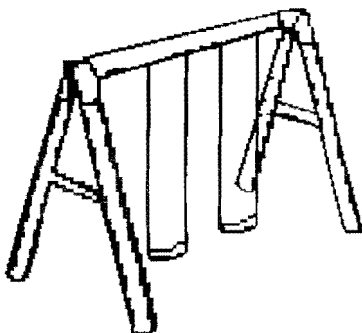
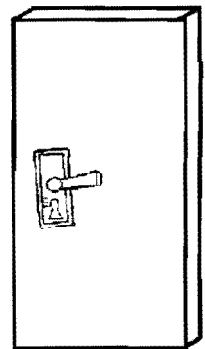
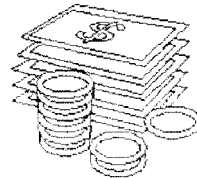
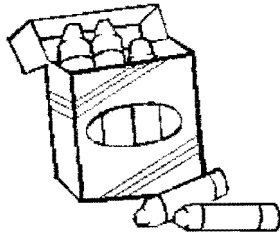
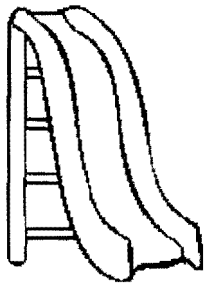


*Salmonella typhimurium (bacteria)*

# Germ Characters Coloring Sheet



NAME: \_\_\_\_\_



How many germs did you circle? \_\_\_\_

How many things got rid of germs? \_\_\_\_